



SAFETY AND QUALITY MANAGEMENT SYSTEM

VESSEL PARTICULARS
MV REM MISTAddress: O:\Teknisk
Prepared: ALS
Approved: PGJ
Date printed: 20.05.2011
Rev. no.: 0
Page: 1 of 4**GENERAL**

Name: M/V Rem Mist
Call sign: LKCL
Type of vessel: PSV, PX105
Class: DnV + 1A1, SF, DYNPOS AUTR, Clean Design, OPP-F, COMF-V(3), COMF-C(2), LFL*, ICE-C, NAUT-OSV(A), OILREC, Standby Vessel, Supply Vessel, DK(+), HL(2.8), E0
Yard/ yard number: Ulstein Verft AS, Building no. 289, year 2011
MMSI no.: 259 934 000
IMO no.: 9521667
DNV Id. no.: 29451


MAIN DIMENSIONS

Loa: 88,80 m
Length between pp: 82,00 m
Beam mld: 19,00 m.
Draft mld. main deck: 8,00 m
Depth, loaded waterline: 6,6 m
Gross tonnage: 3970 BRT (69 konv.)
Net tonnage: 1328 BRT (69 konv.)
Dead-weight tonnage: 4528 tdw.

TANK CAPACITIES

Marine diesel oil: 1650 m³
Fresh water: 708 m³
Ballast water: 1804 m³
Urea: 23 m³
Lubrication/ hydraulic oil: 182 m³
Dirty oil: 15 m³
Sludge: 23 m³
Bilge water: 23 m³
Mud (s.g.: 2,8 t/ m³): 1315 m³
Base oil: 615 m³
Drill water: 1804 m³
Brine (s.g.: 2,8 t/ m³): 1315 m³
LFL*/ Special Products (6 tanks): 508 m³
Glykol: 1124 m³
Xylene: 201 m³
Drill Cutting: 408 m³
Mud slop: 1490 m³
Drybulk (6 tanks): 734 m³
ORO: 2265 m³
Deck cargo (10 t/ m²): 2430 ton
Area deck cargo: 916 m²

All details believed to be correct.

	SAFETY AND QUALITY MANAGEMENT SYSTEM	Address: O:\Teknisk
	VESSEL PARTICULARS MV REM MIST	Prepared: ALS Approved: PGJ Date printed: 20.05.2011 Rev. no.: 0 Page: 2 of 4

CARGO PUMPS

2 off Fuel oil:
 2 off Ballast/ DW:
 2 off Fresh water:
 4 off Mud:
 4 off Lobe pumps, Multi Purpose:
 4 off LFL*/ Special Product (Lobe):
 1 off Drill Cutting:
 2 off Bulk Handling System

CAPACITIES

250m³ / t - 9 bar
 250m³ / t - 9 bar
 250m³ / t - 9 bar
 75m³ / t - 24 bar each
 100m³ / t - 9 bar each
 100m³ / t - 9 bar each
 50m³ / t - 60 bar
 Van Alst

MAIN ENGINES

2 off Caterpillar
 2 off Caterpillar

TYPE

3516C, Effect: 2 x 2188 kW
 3512C, Effect: 2 x 1790 kW

AUXILIARY ENGINES

1 off Caterpillar

TYPE

C-9 DI-TA, 200 kW

MAIN PROPELLER/ SIDE THRUSTER

2 off Schottel Twinpropeller
 2 off Brunvoll side thrusters, fwd
 1 off Brunvoll retractable thruster

TYPE

SCD 2020, Effect: 2 x 2500 kW
 FU-80-LRC-2250, Supersilent, Effect: 2 x 1200 kW
 AR-63-LNC-1650, Effect: 850 kW

GENERATORS

2 off AvK Generators
 2 off AvK Generators
 1 off Leroy Somer

TYPE

DSG 86 L 1/4 W, 2333 kVA, 60Hz, 1800 rpm
 DSG 86 K 1/4 W, 1888 kVA, 60Hz, 1800 rpm
 LSAM 46.2 M5, 200 kW, 60Hz, 1800 rpm

HYDRAULIC DECK EQUIPMENT

1 off Odim windlass
 2 off Odim tug winch
 2 off Odim capstan
 6 off Odim cargo securing winch
 1 off deck crane
 1 off Aukra Maritime davit

TYPE

Double Anchor Mooring Winch, 3 Mooring drums
 10/ 15 ton
 10 ton, with drum
 4,6 ton
 TTS Marine, 2t -18m
 AMDT - 3700

RESCUE EQUIPMENT

1 off Mare Safety FRC
 4 off Viking, life rafts

TYPE

GTC 700-2VD
 4 x 25 person


NAUTICAL EQUIPMENT

1 off Furuno radar
 1 off Furuno radar
 1 off Anschutz autopilot
 1 off Furuno AIS
 2 off Anschutz gyro compass
 1 off Anschutz gyro compass
 1 off MT DP-system
 1 off ECDIS
 1 off Furuno Doppler log
 2 off Furuno GPS
 1 off Furuno VDR
 1 off Furuno echo sounder
 1 off Conning system
 1 off Ulstein Bridge Alarm system

TYPE

FAR-2837 S, ARPA
 FCR-2827 S, ARPA
 NautoPilot 2025-C
 FA 150
 22 GG-R/ GGM-R
 22 Compact
 Bridgemate DP2
 Tecdis T-2136
 DS-80
 GP-150
 VR-3000-6G
 FE-700
 Furuno
 UBAS

All details believed to be correct.

	SAFETY AND QUALITY MANAGEMENT SYSTEM	Address: O:\Teknisk
	VESSEL PARTICULARS MV REM MIST	Prepared: ALS Approved: PGJ Date printed: 20.05.2011 Rev. no.: 0 Page: 3 of 4

COMMUNICATION, GMDSS-A3

	TYPE
GMDSS-A3	Sailor, CU5000
1 off Sailor Inmarsat C	Sailor, TT3000EB
2 off Sailor DSC VHF	RT 5022
3 off Sailor, VHF	Tron 2048
3 off Jotron, portable VHF	Tron TR-20
3 off Motorola, UHF	GM 380
6 off Motorola, portable UHF	GP 380 Ex
1 off Furuno Navtex	NX-700B
2 off Jotron free float	1 x 40 S/ 1 x 45SX
1 off Jotron, radar-transponder	Tron Sart
1 off intercom/ PA system	Ulstein IP Com
2 off GSM mobile phone	Telenor
1 off 1 off ShipEquip V-sat	SEVSAT, +47 21 54 25 16
1 off HSPDA router	GSM, 3G router, Telenor

CONTACT DETAILS, VESSEL

<u>Phone:</u>	
V-sat:	+47 21 03 82 01 (bridge)
Mobile, GSM	+47 915 46 216 (bridge)
Mobile, GSM	+47 913 63 596 (engine control room)
<u>E-mail:</u>	
Captain:	mist.captain@remoyship.no
Chief Engineer:	mist.chiefeng@remoyship.no
Bridge:	mist.bridge@remoyship.no
Engine Control Room:	mist.engine@remoyship.no
Rem Hrist, vessel office:	rem.mist@remoyship.no

SHORE BASED MANAGEMENT STRUCTURE

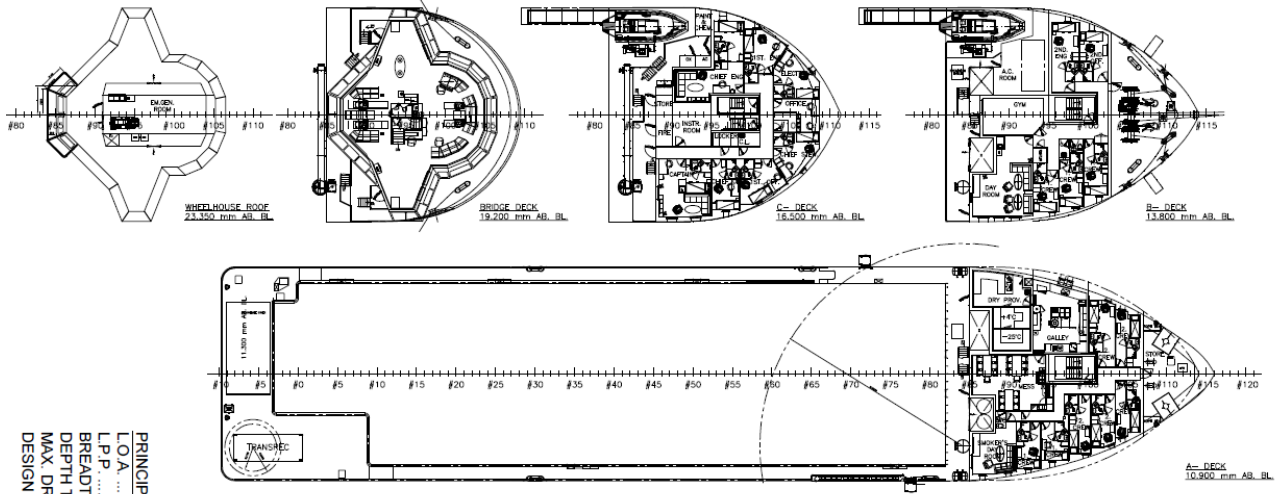
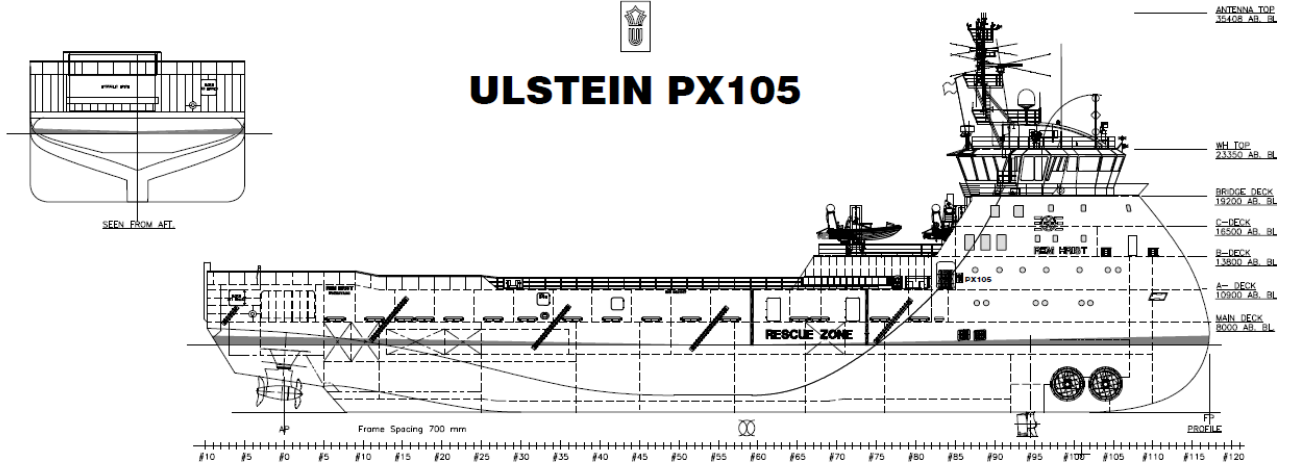
Owner:	SEB Njord AS
Managing Owner:	Nordsjøbas AS
Management/ DOC holder:	Remøy Shipping AS



VESSEL PARTICULARS
MV REM MIST



ULSTEIN PX105



PRINCIPAL DIMENSIONS:

LOA APPROX. 88.8 m

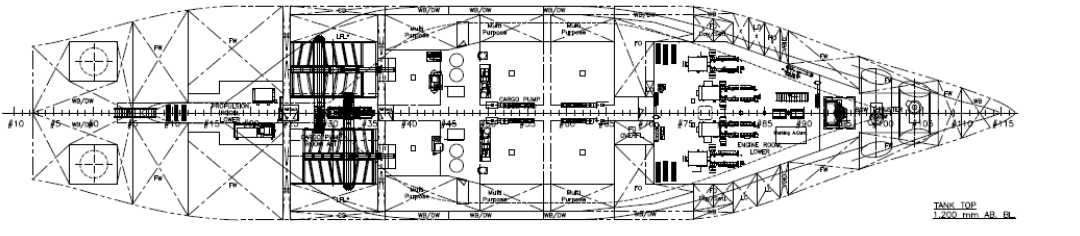
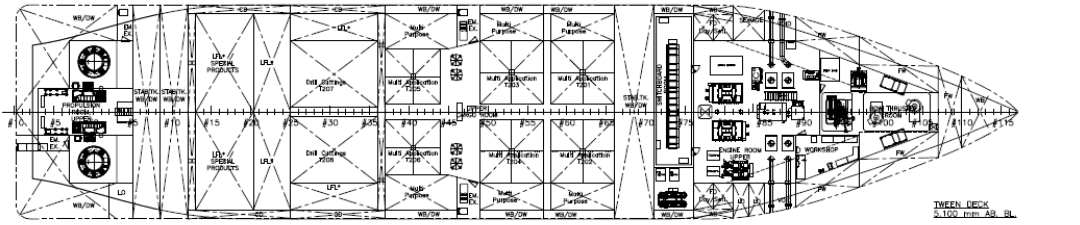
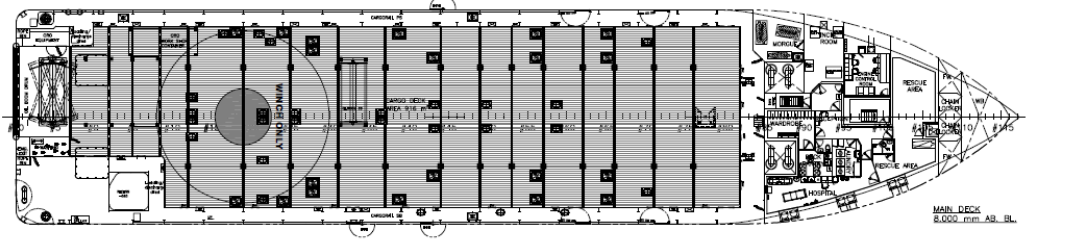
LPP 82.0 m

BREADTH MOULDED 19.0 m

DEPTH TO MAIN DECK 8.0 m

MAX DRAUGHT 6.6 m

DESIGN DRAUGHT 6.0 m



ULSTEIN

GENERAL ARRANGEMENT

ULSTEIN PX105

1:200

DATE: 20.05.2011

PROJECT: ULSTEIN PX105

288-101-100-01

All details believed to be correct.