



REMØY SHIPPING

HERMIT GUARDIAN



The vessel was built and designed by ULSTEIN as a platform supply vessel. The hull form, with the ULSTEIN X-BOW®, combined with diesel electric propulsion system, ensures the best performances with regard to fuel consumption, sea keeping, station keeping, and speed. The main propulsion system comprises two azimuth pulling thrusters, each driven by frequency controlled variable speed electric motor. The Vessel is manned for 24/7 continuous operation.

Vessel Name	HERMIT GUARDIAN
Vessel Call sign	MCVR9
IMO No.	9665114
Owner	PEARL HOLDCO AS
Port of registry	Aberdeen
Delivery year	2013
Yard	Ulstein Yard, Norway
Design	Ulstein PX 121

SPECIFICATIONS

CLASS NOTATION:

DNV GL: *1A1 ICE-C Offshore Service Vessel Supply SF LFL* COMF-V(3)C(3) E0 DYNPOS-AUTR
NAUT- OSV(A) CLEAN DESIGN DK(+) HL(2.8)

The vessel is fitted with:

- Good cargo capacities
- Excellent station keeping capabilities
- Modern, high standard accommodation
- IMO Class II for dynamic positioning

MAIN PARTICULARS:

Length overall	83.40 m
Length between p.p.	76.50 m
Breadth moulded	18.00 m
Depth main deck	8.00 m
Max t/m ²	5 MT fwd of frame 35 10 MT aft of frame 35
Max. load line draft midship	6.70 m
Speed (at d=3.7 m, approx.)	15.6 knots
Consumption	5.5 MT/d @ 10 kts 21.1 MT/d @ 15 kts
ERN	99.99.99.89
Air draught	30,5 m

POSITION REFERENCE SYSTEMS:

CyScan - Laser
DGPS
RADius

CAPACITIES:

Cargo deck area (free area - 10T/5T/m ²)	850 m ²
Deck cargo (COG=1.0 above main deck)	2 240 t
Deadweight	4 200 t

MAIN ENGINES GENERATOR SETS:

2 x main diesel engines, 2 250 ekW each, 690 V, 1 800 rpm
2 x main diesel engines, 940 ekW each, 690 V, 1 800 rpm

EMERGENCY GENERATOR SET:

1 x emergency generator set, 187 ekW, 690 V, 1 800 rpm

THRUSTERS:

3 x electrical driven side thrusters forward:
2 x Tunnel thrusters, 880kW, 0-1200 RPM
1 x Azimuth retractable thruster, 880 kW, 1800RPM

MAIN PROPULSION:

2 x azimuth thrusters, electrical driven frequency controlled propellers and water-cooled drives.
Power: 2 200 ekW each








DECK EQUIPMENT:

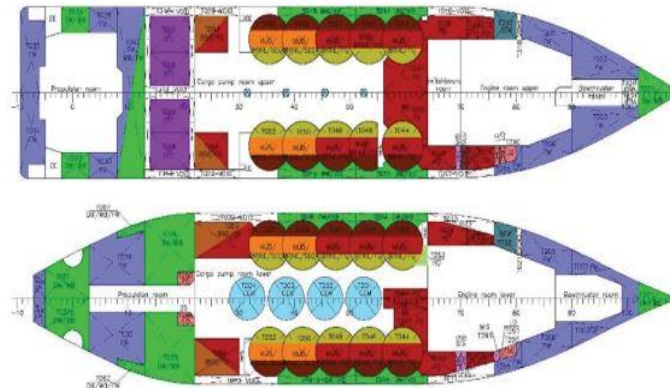
1 x Hydraulic deck / provision crane, 3T 18M

ACCOMMODATION:

Accommodation and equipment for 23 persons

TANK CAPACITIES:

Medium	Volume m ³	No tanks	No pumps	m ³ /hour per pump
 Fuel oil	1474.5	21	2	250
 Base oil	259.6	2	1	150
 Water Ballast / Drill Water	1 671/ 1 567.2	22*	2	250
 Fresh Water	1 018	11*	2	200
 Dry Bulk	254.7	4		Compressed dried air
 Mud / Brine	1 307.2	10	2/2	100/150
 Methanol	153.7	4	2	75



* Indicated volume is maximum for each medium. Two tanks (331 m³) can be configured for both mediums.