



REMØY SHIPPING

HERMIT FIGHTER



The vessel was built and designed by ULSTEIN as a platform supply vessel. The hull form, with the ULSTEIN X-BOW®, combined with diesel electric propulsion system, ensures the best performances with regard to fuel consumption, sea keeping, station keeping, and speed. The main propulsion system comprises two azimuth pulling thrusters, each driven by frequency controlled variable speed electric motor. The Vessel is manned for 24/7 continuous operation.

Vessel Name	HERMIT FIGHTER
Vessel Call sign	LAIV6
IMO No.	9613692
Owner	PEARL BIDCO AS
Port of registry	Aalesund, Norway
Delivery year	2012
Yard	Ulstein Yard, Norway
Design	Ulstein PX 121

SPECIFICATIONS

CLASS NOTATION:

DNV GL: *1A1 Offshore Service Vessel Supply SF LFL* COMF-V(3)C(3) E0 DYNPOS-AUTR
NAUT- OSV(A) CLEAN DESIGN DK(+) HL(2.8)

The vessel is fitted with:

- Good cargo capacities
- Excellent station keeping capabilities
- Modern, high standard accommodation
- IMO Class II for dynamic positioning

MAIN PARTICULARS:

Length overall	83.40 m
Length between p.p.	76.50 m
Breadth moulded	18.00 m
Depth main deck	8.00 m
Max t/m ²	5 MT fwd of frame 35 10 MT aft of frame 35
Max. load line draft midship	6.70 m
Speed (at d=3.7 m, approx.)	15.6 knots
Consumption	6MT/d @ 10 kts 18MT/d @ 14 kts
ERN	99.99.91.68
Air draught	30,5 m








POSITION REFERENCE SYSTEMS:

CyScan
DPS 122/110
Radius 1000

CAPACITIES:

Cargo deck area (free area - 10T/5T/m ²)	850 m ²
Deck cargo (COG=1.0 above main deck)	2 240 t
Deadweight	4 200 t

TANK CAPACITIES:

Medium	Volume m ³	No tanks	No pumps	m ³ /hour per pump
 Fuel oil	589	6	2	250
 Base oil	260	2	1	150
 Water Ballast / Drill Water	1 675	22	2	250
 Fresh Water	702	8	2	200
 Dry Bulk	254	4	2	Compressed dried air
 Mud / Brine	1 020/510	8/4	2/2	100/150
 Methanol	154	4	2	75

MAIN ENGINES GENERATOR SETS:

2 x main diesel engines, 2 250 ekW each, 690 V, 1 800 rpm
2 x main diesel engines, 940 ekW each, 690 V, 1 800 rpm

EMERGENCY GENERATOR SET:

1 x emergency generator set, 187 ekW, 690 V, 1 800 rpm

THRUSTERS:

2 x electrical driven side thrusters forward:
1 x Tunnel thrusters, 1050 kW, 0-1200 RPM
1 x Azimuth retractable thruster, 880 kW, 1800RPM

MAIN PROPULSION:

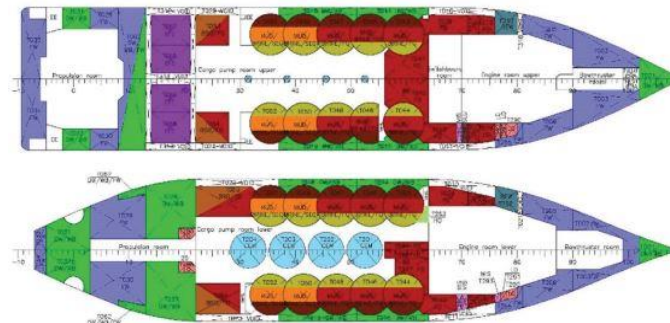
2 x azimuth thrusters, electrical driven frequency controlled propellers and water-cooled drives.
Power: 2 200 ekW each

DECK EQUIPMENT:

1 x Hydraulic deck / provision crane, 3T 18M

ACCOMMODATION:

Accommodation and equipment for 23 persons



If configuration is 4 brine tanks, only 4 mud tanks remains for use. If configuration is 8 mud tanks, no brine is available.