



REMØY SHIPPING

# HERMIT VIKING



The vessel was built and designed by ULSTEIN as a platform supply vessel. The hull form, with the ULSTEIN X-BOW®, combined with diesel electric propulsion system, ensures the best performances with regard to fuel consumption, sea keeping, station keeping, and speed. The main propulsion system comprises two azimuth pulling thrusters, each driven by frequency controlled variable speed electric motor.

Vessel Name	HERMIT VIKING
Vessel Call sign	LAMM8
IMO No.	9722522
Owner	PEARL BIDCO AS
Port of registry	Molde
Delivery year	2015
Yard	Ulstein Yard, Norway
Design	Ulstein PX 121

# SPECIFICATIONS

## CLASS NOTATION:

DNV: \*1A1 Offshore Service Vessel(Supply), Clean(Design), COMF(C-3, V-3), DK(+), DYNPOS(AUTR), EO, HL(2.8), Ice(C), LFL(\*), NAUT(OSV(A)), OILREC, Recyclable, SF

The vessel is fitted with:

- Good cargo capacities
- Excellent station keeping capabilities
- SCR Plant for NOx reduction

- Modern, high standard accommodation
- IMO Class II for dynamic positioning

The Vessel is manned for 24/7 continuous operation

## MAIN PARTICULARS:

Length overall	83.40 m
Length between p.p.	76.50 m
Breadth moulded	18.00 m
Depth main deck	8.00 m
Max t/m <sup>2</sup>	5 MT fwd of frame 35 10 MT aft of frame 35
Max. load line draft midship	6.70 m
Speed (at d=3.7 m, approx.)	15.6 knots
Consumption	6MT/d @ 10 kts 18MT/d @ 14 kts
ERN	99.99.99.89
Air draught	30,5 m

## MAIN ENGINES GENERATOR SETS:

2 x main diesel engines, 2 250 ekW each, 690 V, 1 800 rpm  
2 x main diesel engines, 940 ekW each, 690 V, 1 800 rpm

## EMERGENCY GENERATOR SET:

1 x emergency generator set, 187 ekW, 690 V, 1 800 rpm

## THRUSTERS:

3 x electrical driven side thrusters forward:  
2 x Tunnel thrusters, 880kW, 0-1200 RPM  
1 x Azimuth retractable thruster, 880 kW, 1800RPM

## POSITION REFERENCE SYSTEMS:

Laser  
DGPS  
RADius

## MAIN PROPULSION:

2 x azimuth thrusters, electrical driven frequency controlled propellers and water-cooled drives.  
Power: 2 200 ekW each

## CAPACITIES:

Cargo deck area (free area - 10T/5T/m <sup>2</sup> )	850 m <sup>2</sup>
Deck cargo (COG=1.0 above main deck)	2 240 t
Deadweight	4 065 t








## DECK EQUIPMENT:

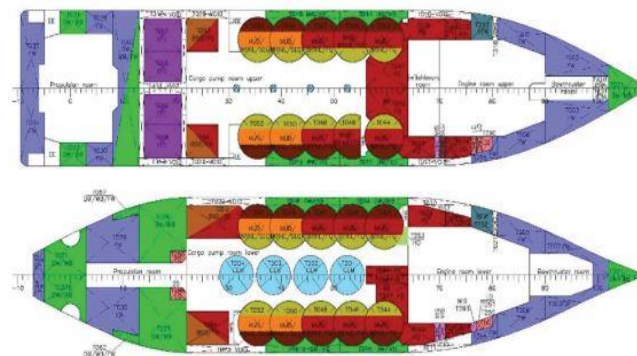
1 x Hydraulic deck / provision crane, 3T 18M

## ACCOMMODATION:

Accommodation and equipment for 22 persons

## TANK CAPACITIES:

Medium	Volume m <sup>3</sup>	No tanks	No pumps	m <sup>3</sup> /hour per pump
 Fuel oil	559/1 346	6/12	2	250
 Base oil	254	2	1	150
 Water Ballast / Drill Water	1 599	22	2	250
 Fresh Water	685/1 016	8/10	2	200
 Dry Bulk	254	4	2	Compressed Dried Air
 Mud / Brine	1 293/1 293	10	2/2	100/150
 Methanol	155	4	2	75
ORO	1 015	8	2	150



Configuration of combitanks decides capacity of mud/ brine/ slop/ FO